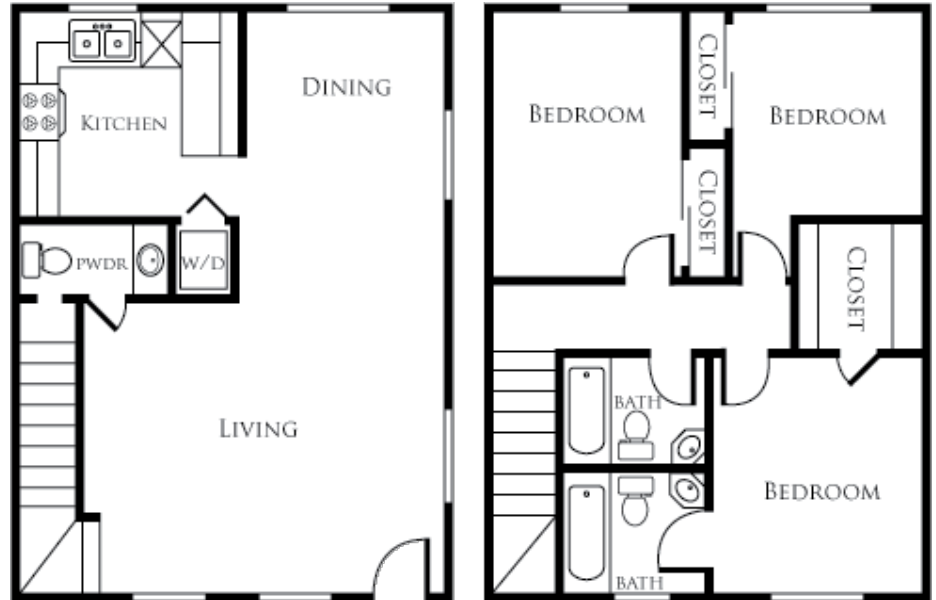


Gazelle

Beds: 3
Baths: 2-1/2
Sq. Feet: 1,088



Amenities

- Children's Play Area
- Clubhouse
- Picnic Area with Barbecue
- Copy & Fax Services
- Access to Public Transportation
- Easy Access to Freeways
- Laundry Facility
- Monthly Resident Council
- Fun & Fitness

Features

- Disability Access
- Some Paid Utilities

- Tile and Carpeted Flooring
- Gourmet All-electric Kitchens with Garbage Disposal, Dish-washer, Pantry and Refrigerator
- Spacious Floorplans and Walk-in Closets
- Extra Storage
- Private Patio/Balcony
- Ceiling Fans
- Cable & Satellite-ready
- Washer and Dryer Available*
- Spectacular Views Available*

*In select apartment homes

